

# Community Lifestyle

COLLECTION







**Ritz-Craft**  
CUSTOM HOMES




## We're distinctively different...

Customers have come to expect a higher standard with **Ritz-Craft Community Lifestyle Collection** homes and we design each home with that philosophy in mind.

All of our homes include custom-residential features and materials such as full profile moldings, smooth-finish drywall for walls and ceilings and name brand plumbing and electrical fixtures. Your new Ritz-Craft home will also include **Legacy Crafted Cabinets** with premium standard features including dove-tail drawer construction, soft-close doors and drawers, fully adjustable shelving, hand finished doors and face frames, and much more. All homes also include excellent energy efficiency as a result of our own best-practice construction methods to minimize air infiltration, provide economical energy consumption and to keep you comfortable.

Our home designs are distinctive as well. Your new home will be built for long term comfort and with many of our own "beyond code" standard features such as 8' ceilings, 3'-6" wide hallways and 3' wide master bedroom, master bath and master closet doors. Kitchen and bath layouts are designed with a little extra "elbow room" for your comfort and ease of access. Even secondary bedrooms, baths and utility rooms include some extra room and wider doors than required by code. All of these design features help to ensure that you'll enjoy your new Ritz-Craft Home at time of move-in and for many years to come.



We are also proud to be able to offer plan modification or customization. Your community sales professional can work with you to incorporate your ideas into one of our plans and our engineering professionals will draw the details to make your special requests a reality. So go ahead and discuss your special space requirements for your hobby or to fit an heirloom furniture piece--we'll do our part to accommodate your personal wish list.

We thank you for considering a Ritz-Craft Community Lifestyle Collection Home. We look forward to making your new home the next and most important home we build.

# As custom as you like...







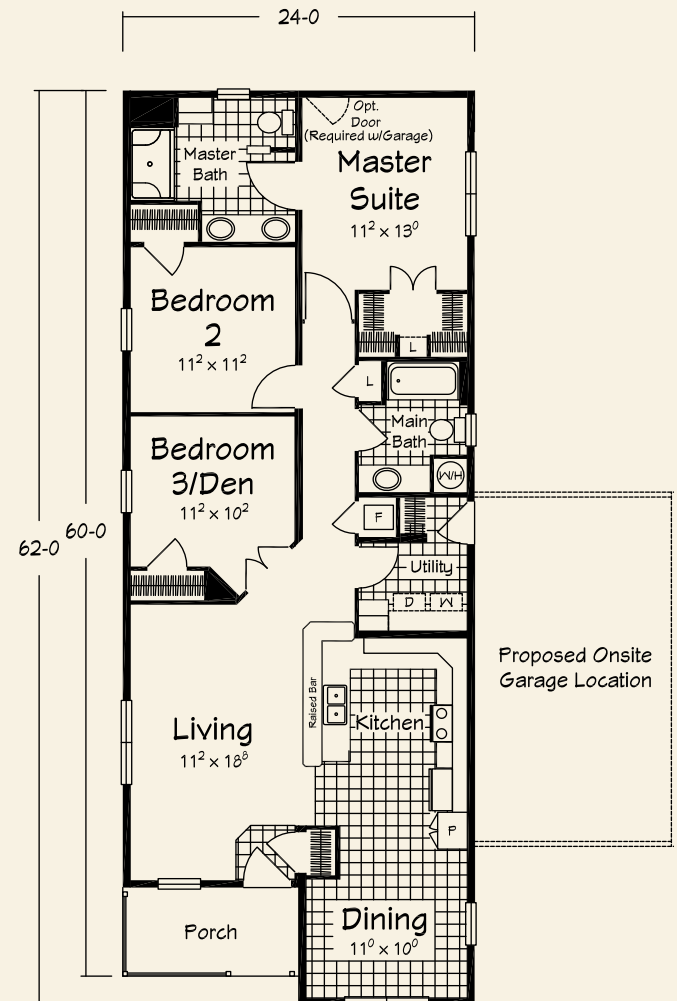
Shown with site built garage.

## Brookstone

1382 sq. ft. Living Area

72 sq. ft. Porch

- 3 Bedrooms
- 2 Baths

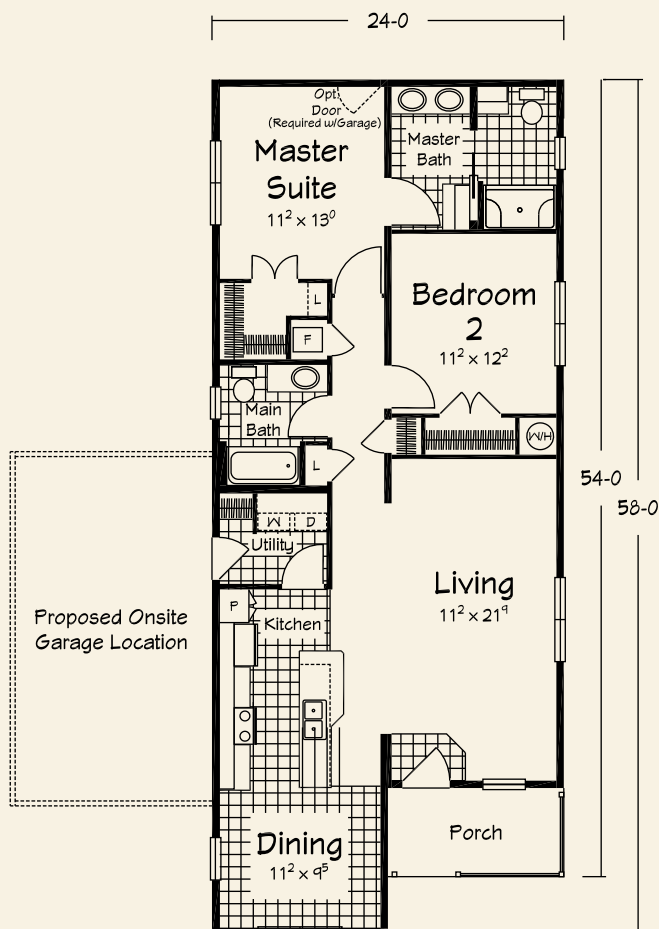


## Avondale

1263 sq. ft. Living Area

68 sq. ft. Porch

- 2 Bedrooms
- 2 Baths



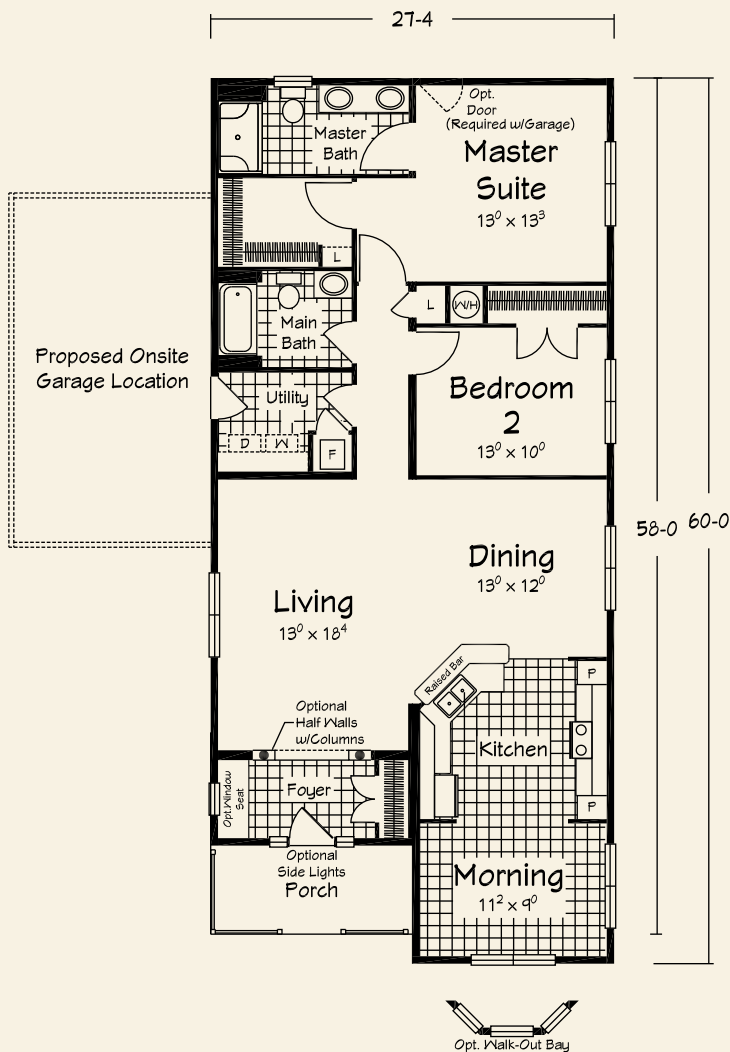
Floor plan exterior dimensions and interior room sizes are accurate, but may have been "rounded" for brochure plans. Always refer to Ritz Craft provided prints for actual dimensions. Renderings depict the general style of the home plans adjacent to the rendering but may not be exact to all plans shown. For final dimensions and details, refer to the front elevation drawings in the print set for each plan.



# Baytowne

1531 sq. ft. Living Area  
81 sq. ft. Porch

- 2 Bedrooms
- 2 Baths

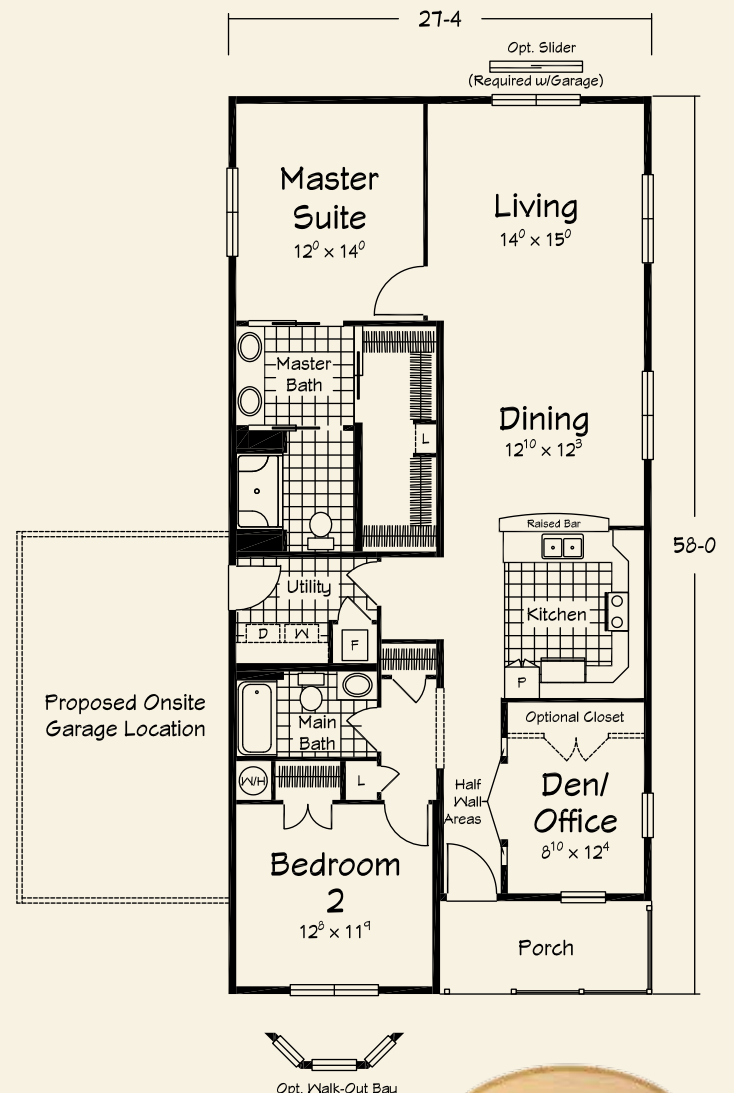


*Shown with site built garage.*

# Bayview

1506 sq. ft. Living Area  
82 sq. ft. Porch

- 2 Bedrooms
- 2 Baths



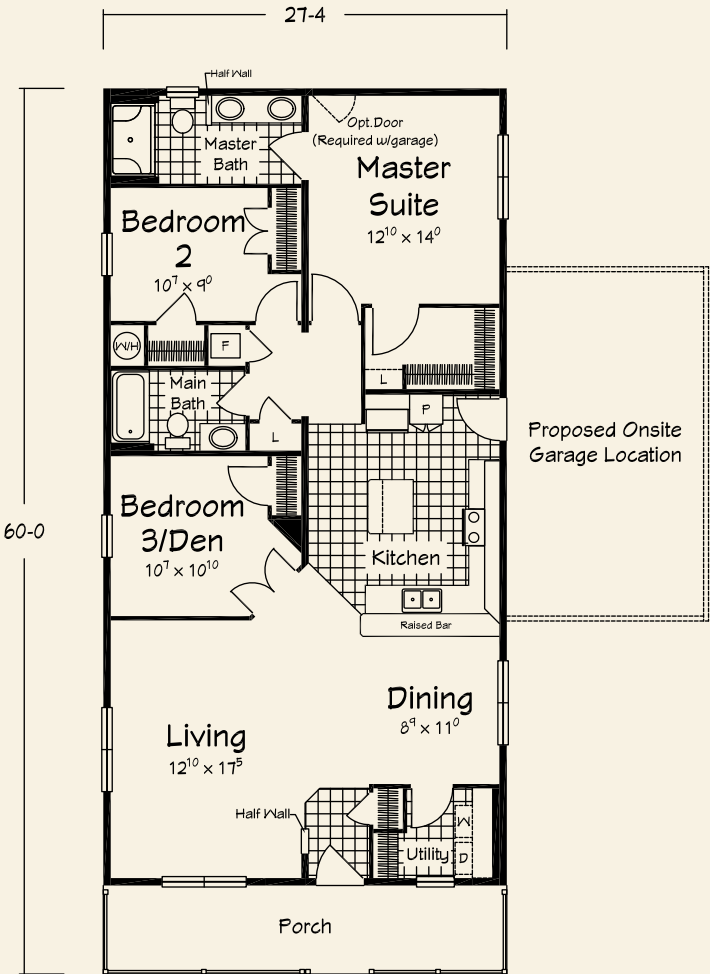


Shown with site built garage.

# Clearwater

1476 sq. ft. Living Area  
164 sq. ft. Porch

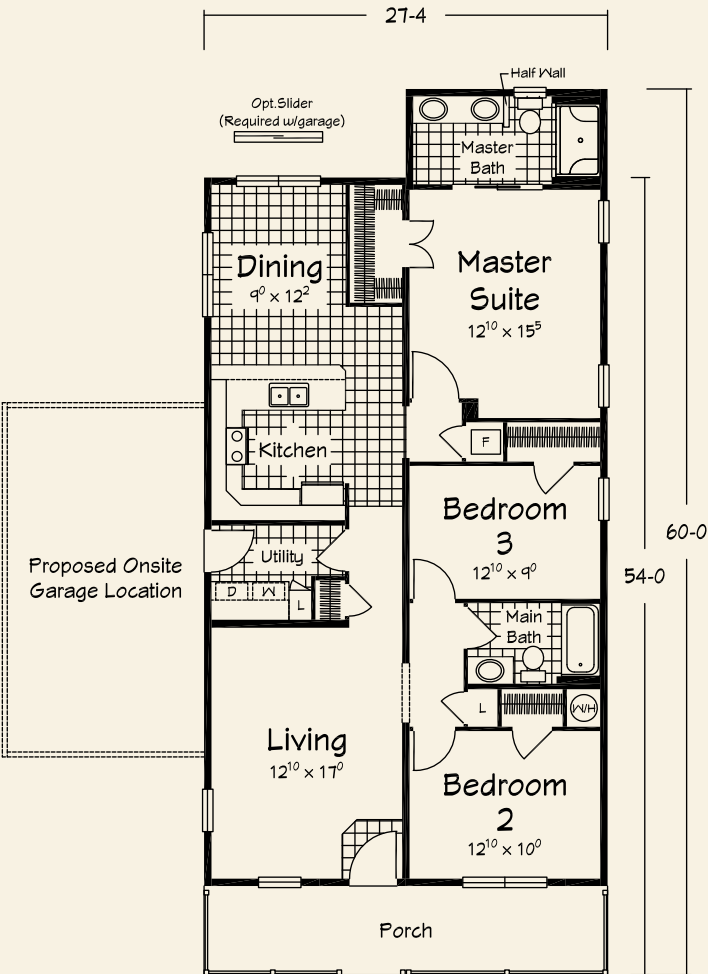
- 3 Bedrooms
- 2 Baths



# Castleton

1394 sq. ft. Living Area  
164 sq. ft. Porch

- 3 Bedrooms
- 2 Baths







# Carverton

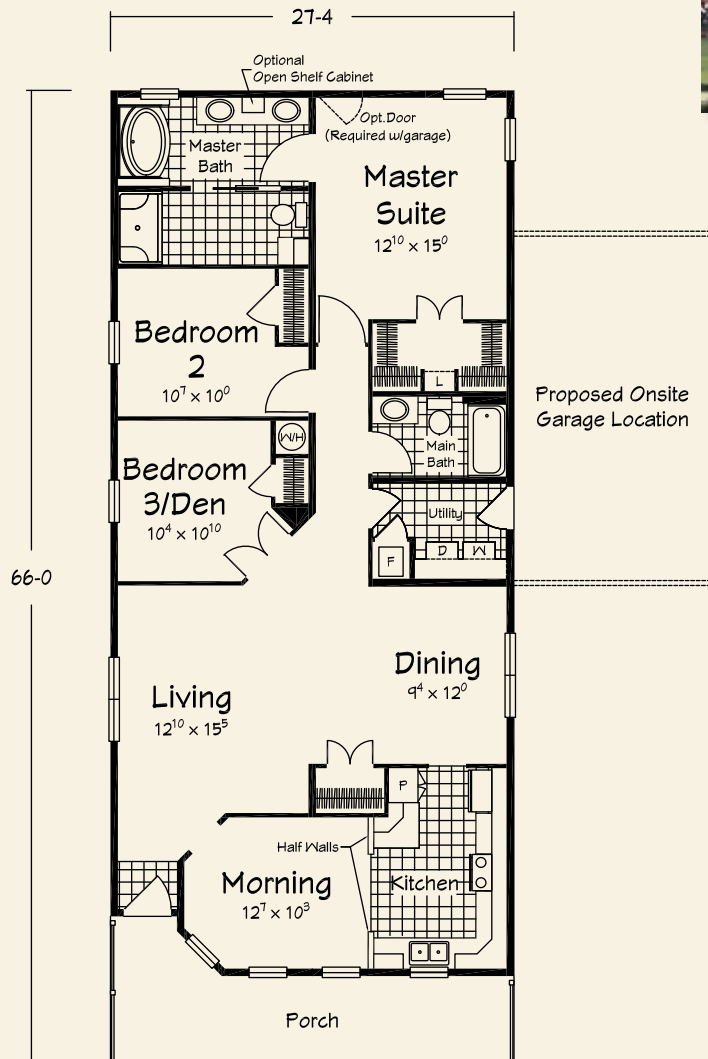
1617 sq. ft. Living Area

186 sq. ft. Porch

- 3 Bedrooms
- 2 Baths



*Shown with site built garage.*

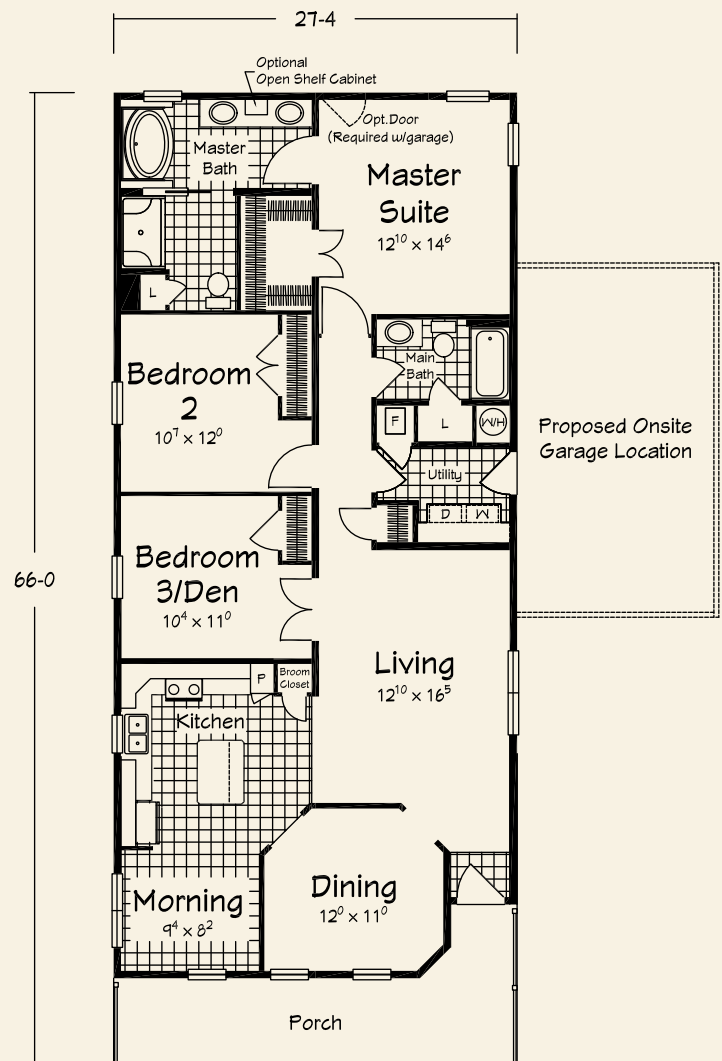


# Crestview

1615 sq. ft. Living Area

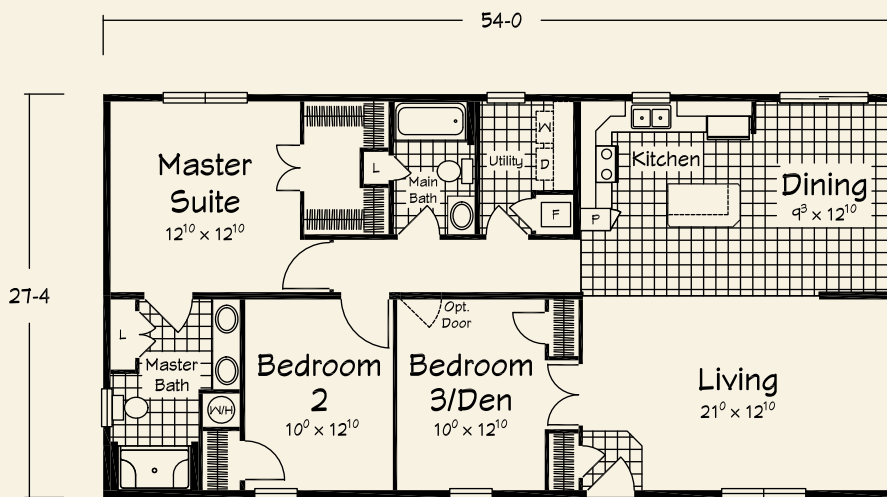
188 sq. ft. Porch

- 3 Bedrooms
- 2 Baths





Shown with site built porch.



## Daleville

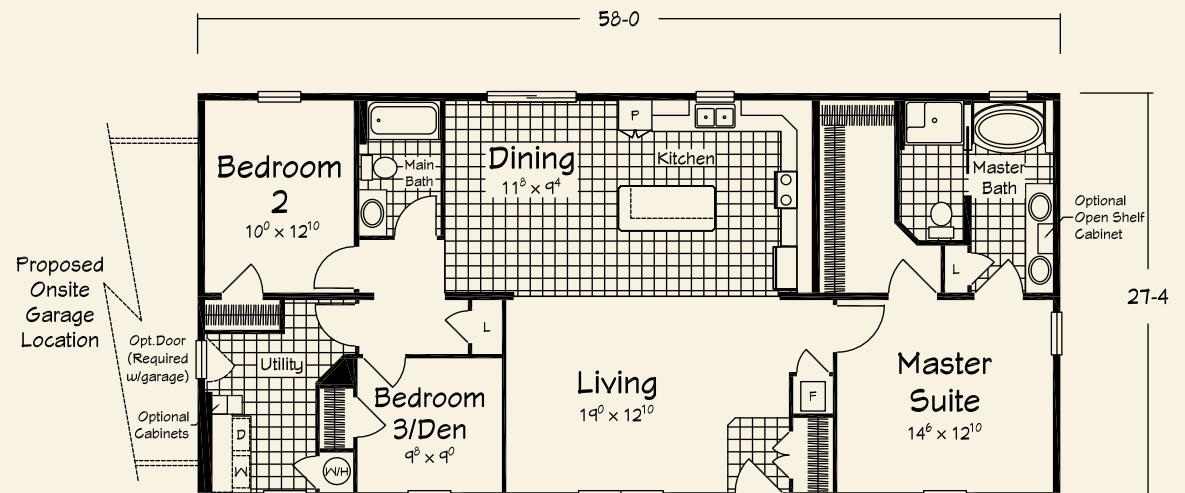
1476 sq. ft. Living Area

- 3 Bedrooms
- 2 Baths

## Dresden

1585 sq. ft. Living Area

- 3 Bedrooms
- 2 Baths

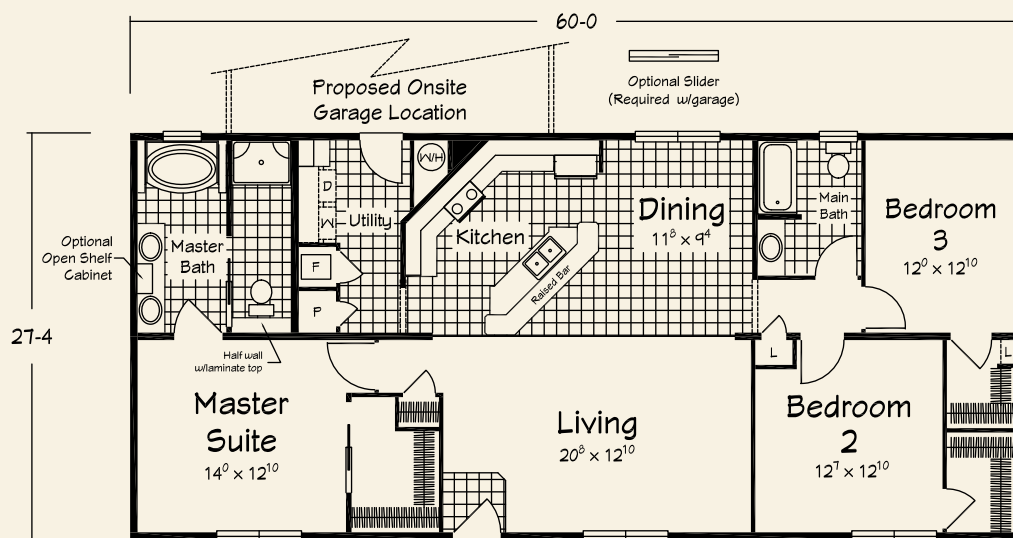


Floor plan exterior dimensions and interior room sizes are accurate, but may have been "rounded" for brochure plans. Always refer to Ritz Craft provided prints for actual dimensions. Renderings depict the general style of the home plans adjacent to the rendering but may not be exact to all plans shown. For final dimensions and details, refer to the front elevation drawings in the print set for each plan.





*Shown with site built porch.*



## Delray

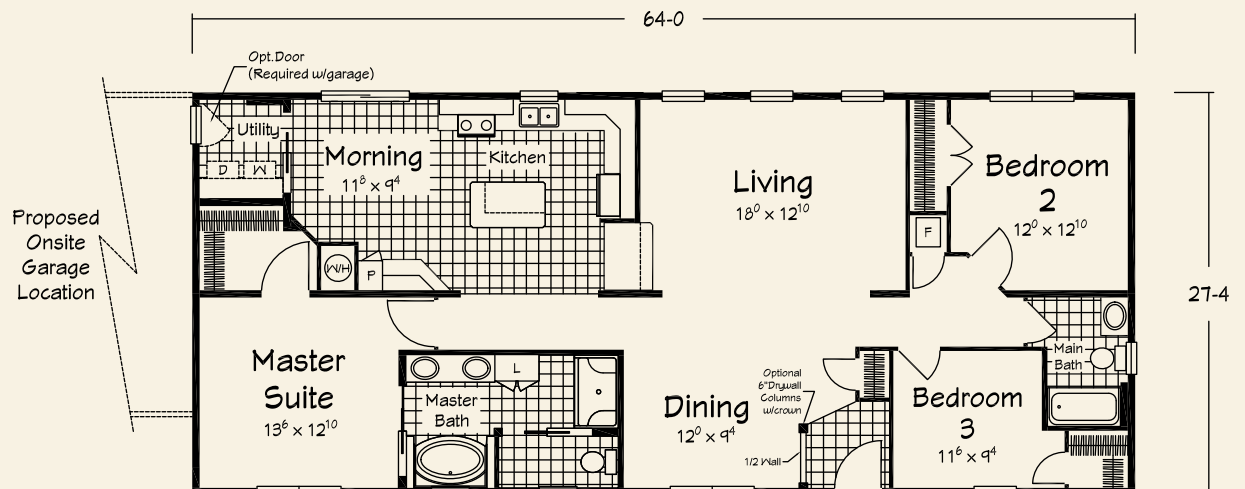
1640 sq. ft. Living Area

- 3 Bedrooms
- 2 Baths

## Davenport

1749 sq. ft. Living Area

- 3 Bedrooms
- 2 Baths

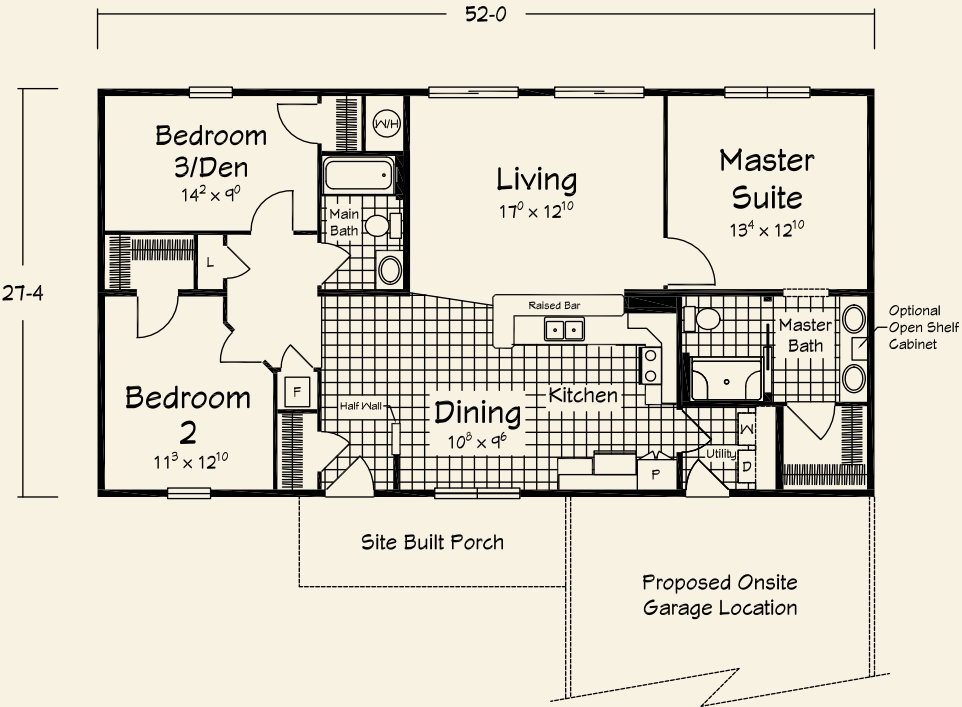




*Shown with site built garage and porch.*

# Fairlane

- 1394 sq. ft. Living Area
- 3 Bedrooms
  - 2 Baths



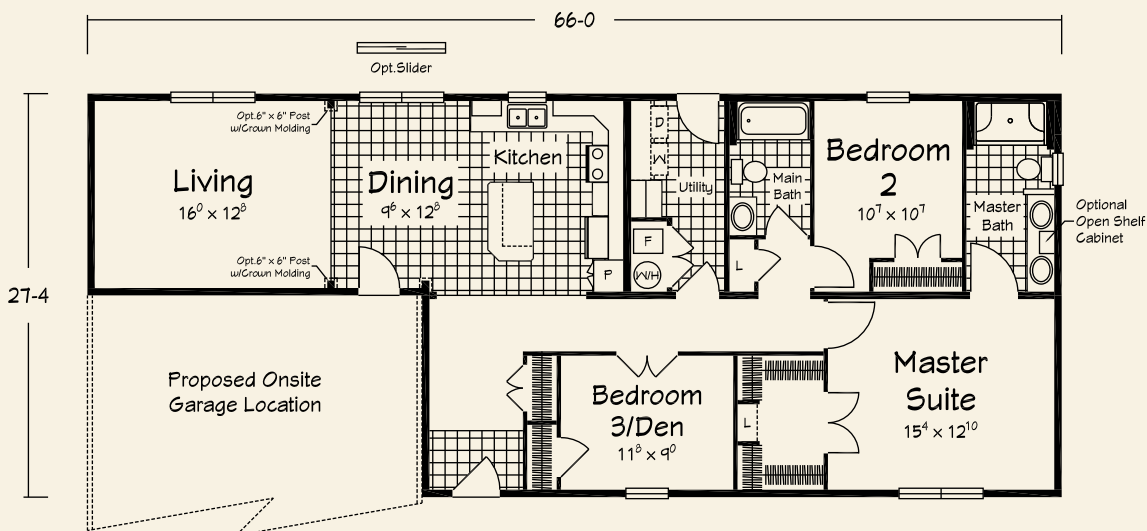
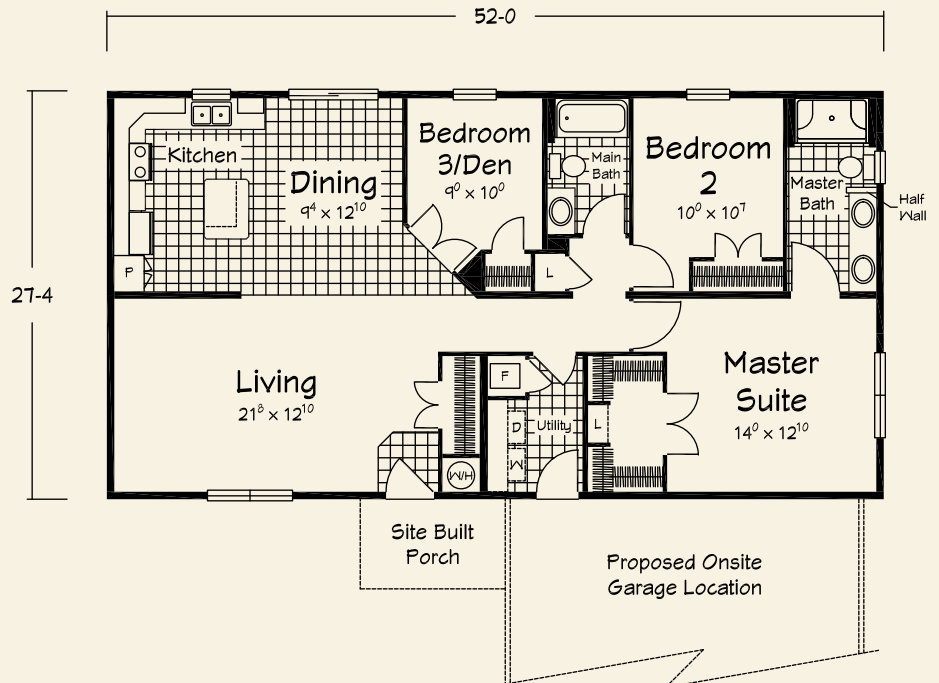




## Fairgate

1421 sq. ft. Living Area

- 3 Bedrooms
- 2 Baths



## Fairfield

1494 sq. ft. Living Area

- 3 Bedrooms
- 2 Baths

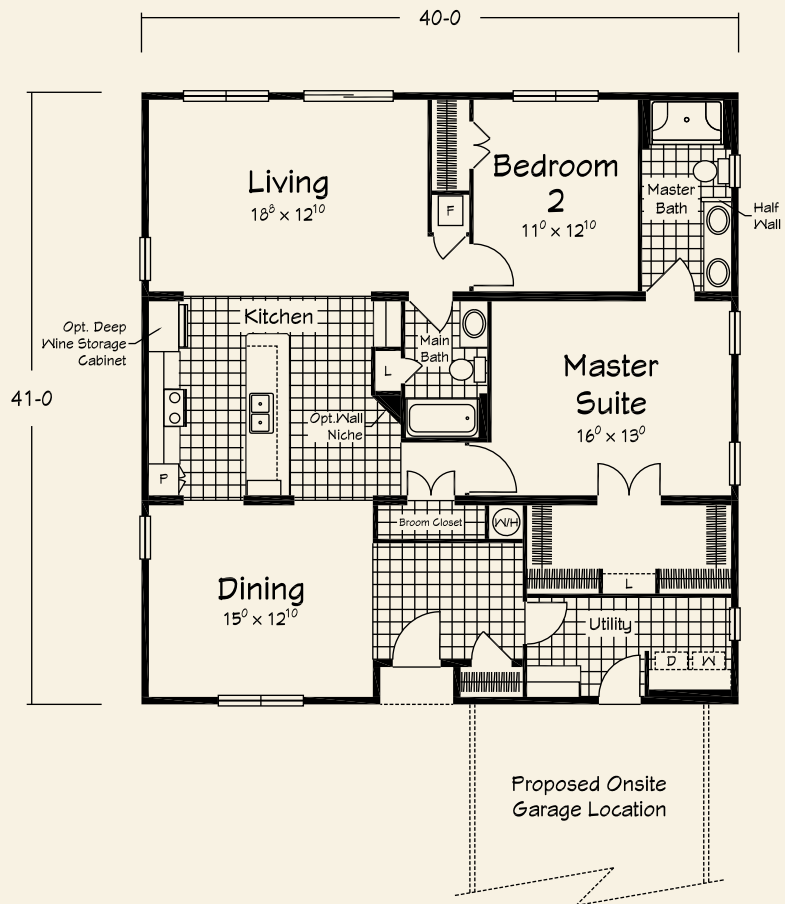


*Shown with site built garage.*

# Green Valley

1640 sq. ft. Living Area

- 2 Bedrooms
- 2 Baths



Floor plan exterior dimensions and interior room sizes are accurate, but may have been "rounded" for brochure plans. Always refer to Ritz Craft provided prints for actual dimensions. Renderings depict the general style of the home plans adjacent to the rendering but may not be exact to all plans shown. For final dimensions and details, refer to the front elevation drawings in the print set for each plan.



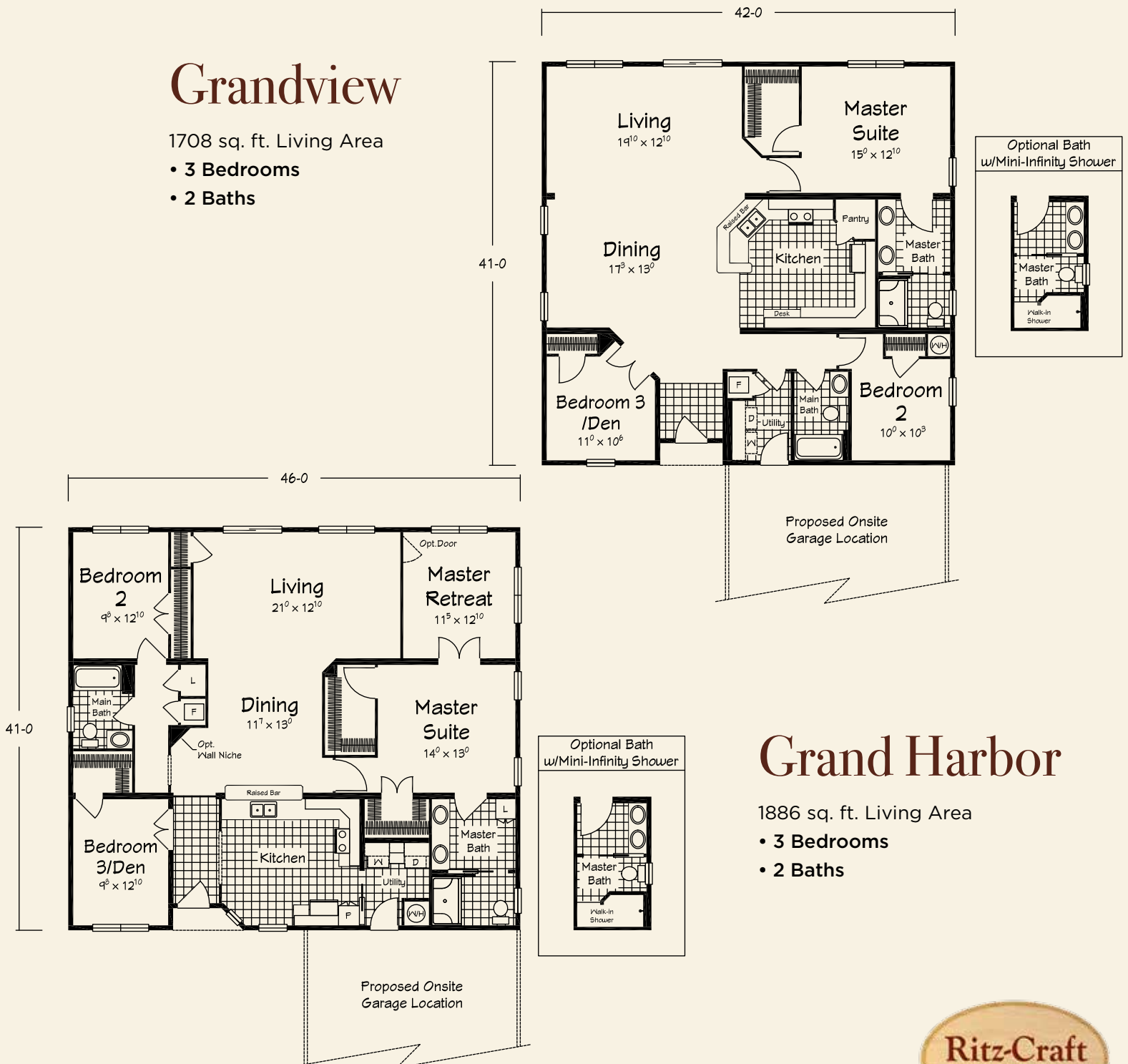


*Shown with site built garage.*

## Grandview

1708 sq. ft. Living Area

- 3 Bedrooms
- 2 Baths



## Grand Harbor

1886 sq. ft. Living Area

- 3 Bedrooms
- 2 Baths



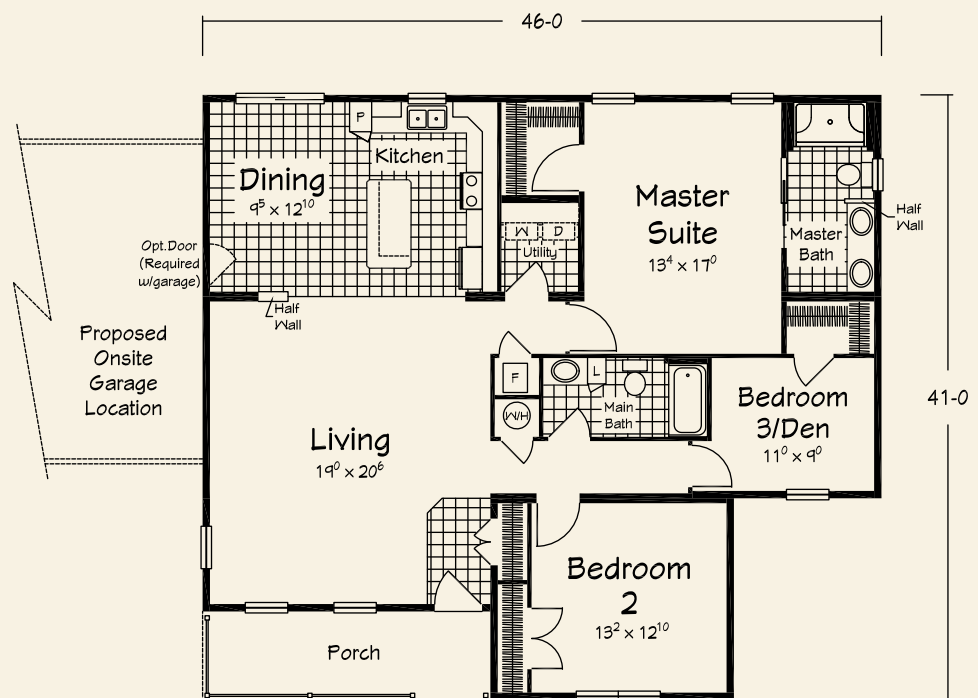
*Shown with site built garage.*

# Hammond

1632 sq. ft. Living Area

117 sq. ft. Porch

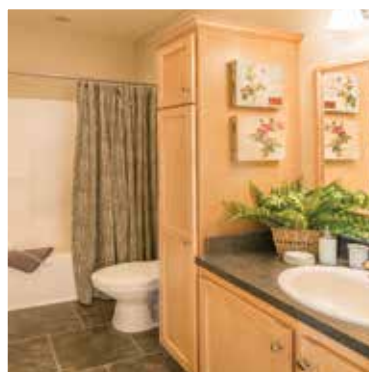
- 3 Bedrooms
- 2 Baths



Floor plan exterior dimensions and interior room sizes are accurate, but may have been "rounded" for brochure plans. Always refer to Ritz Craft provided prints for actual dimensions. Renderings depict the general style of the home plans adjacent to the rendering but may not be exact to all plans shown. For final dimensions and details, refer to the front elevation drawings in the print set for each plan.



As custom as you like...



Photos show optional features. Be sure to discuss all included standard features and costs for options with your selected home builder.



*Your approved  
Ritz-Craft  
Homebuilder:*



*Approved homebuilders are independent business entities and are not agents of Ritz-Craft Corporation.*

Due to occasional updating of building codes and Ritz-Craft's continuous product improvement, specifications are subject to change without prior notification. Be sure to request a copy of current specifications from your selected homebuilder.

©2016 Ritz-Craft Corporation 0116

